

*Aliaxis*



## FRIAFIT® **FIXBLOC**

For use as a pull-out protection,  
for fixing or to  
create a fixed point

[www.friafit.com](http://www.friafit.com)

# THE FRIAFIT FIXBLOC DOESN'T GIVE UP!

For universal use on HD-PE pipes SDR 33 to SDR 11 with dimensions d 160 up to d 1600 as a creation of fixed point, as a pull-out protection, assembly aid or fixation to pipe bearing

The FRIAFIT FIXBLOC can be used anywhere, where high axial thrust and tensile forces must be absorbed. For example, for pipe reconstructions, when creating fixed points and fixings.

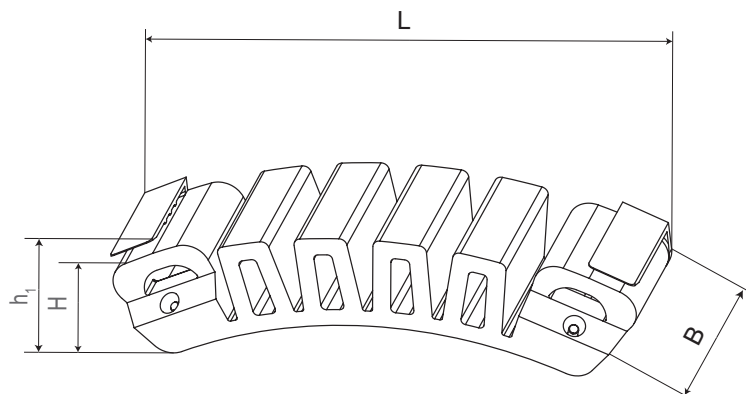
Thanks to its compact construction, exposed heating coils - which allow optimum heat transfer - and the large fusion zone, high levels of push-pull forces of up to 40 kN / 9000 lbf per FIXBLOC can be absorbed without a problem. When using several FIXBLOCs on the pipe, even higher forces can be absorbed.

The assembly of the FRIAFIT FIXBLOC is simple and fast using a tensioning belt or - where the pipe circumference is not

accessible - using the FRIATOOLS FIXBLOC FWFB clamping unit. With the tension belt assembly the FIXBLOC is fitted on the pipe with a standard tensioning belt.

When assembling using the FRIATOOLS FIXBLOC FWFB clamping unit, the FIXBLOC can also be clamped from the cut edge of the pipe and be fused. This is particularly useful if the pipe circumference is not accessible, e.g. in case of a PE-Liner, which must be anchored against the concrete wall of a manhole.

The fusion process is carried out using standard fusion units, e.g. using our FRIAMAT.



## YOUR CONTACT

> info-friafit@friatec.de  
> www.friafit.com  
> +49 621 486-1896



d	Order Ref.	Stock-status	BX	PU	L	H	h1	B	Weight
160 - 1600 mm	680600	1	15	750	220 mm	40 mm	45 mm	60 mm	0,310 kg/each
6 - 64 IPS	680600	1	15	750	8.661 inch	1.575 inch	1.772 inch	2.362 inch	0.683 lbs/each

## STANDARD PROCESSING - EASY AND SAFE WITH TENSIONING BELT

The FRIAFIT FIXBLOC can be fitted with a standard tensioning belt onto a PE pipe. If a higher force is required, then several FIXBLOCs can be applied to one pipe.

Requirement for the tensioning belt:

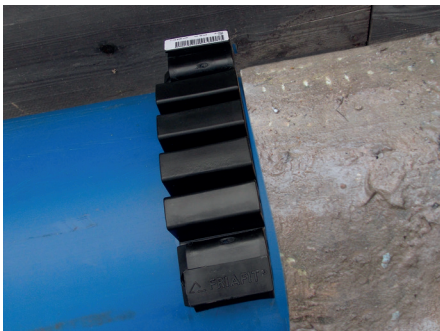
- Belt width 50 mm
- Belt length approx. 3.5 x pipe diameter, or for multiple applications accordingly longer



Assembly with tensioning belt.

## FRIAFIT FIXBLOC - UNIVERSAL APPLICATION CAPABILITIES

In pipe reconstruction. Due to cooling effects, the retracted PE pipe or PE liner can be pulled into the old pipe.



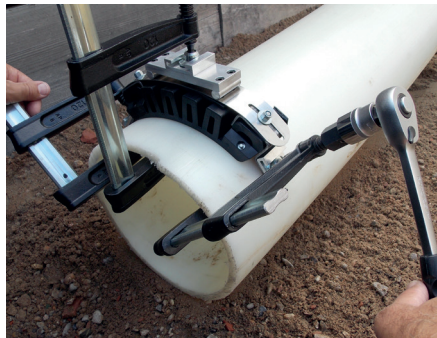
Blocking pipe movement in pipe reconstruction.



Anchoring the pipe to a concrete wall such as a manhole.

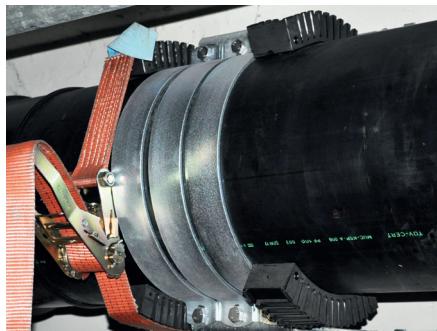
## PROCESSING USING THE FIXBLOC FWFB CLAMPING UNIT

Using the FRIATOOLS FIXBLOC FWFB clamping unit you can assemble the FIXBLOC on PE pipes with dimension range from d 160 to d 500 at the end of the pipe.



Assembly with the FRIATOOLS FIXBLOC FWFB clamping unit.

To create a fixed point.



Use as a fixed point for overground pipe installations.



Use as a fixing for sink weights for under water pipelines.

## YOUR BENEFITS:

- Strength for each fixed point up to 40 kN
- Multiple applications around the pipe circumference are possible
- Simple processing using standard tensioning belts or using the FIXBLOC FWFB clamping unit

*Aliaxis*

FRIATEC Aktiengesellschaft  
Technical Plastics Division  
P.O.B. 710261 · 68222 Mannheim, Germany  
Tel +49 621 486-1896- Fax +49 621 486-25-1896  
[www.friaifit.com](http://www.friaifit.com)

