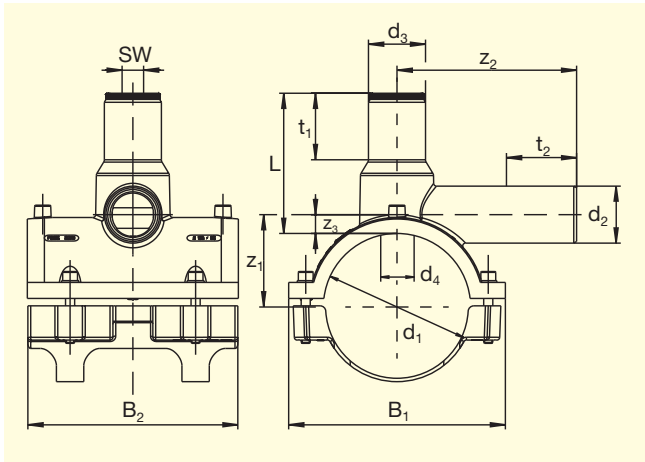


FRIALEN®-Pressure Tapping Tees DAAI

with extra long outlet spigot*

PE 3408/4710 SDR 11

Maximum working pressure 200 psi (Water) / 125 psi (Gas)



d ₁	d ₂	Order Ref.	Stock-status	VE	VP	L	z ₁	t ₂	B ₁	B ₂	Drilling Ø d ₄	Weight kg/each
2 IPS*	1/2 CTS	T-612 878	2	16	288	3.88	1.78	1.26	3.86	4.10	0.85	0.472
2 IPS	3/4 IPS	T-612 850	2	16	288	3.88	1.78	1.38	3.86	4.10	0.85	0.445
2 IPS	1 CTS	T-612 854	2	16	288	3.88	1.78	1.65	3.86	4.10	0.85	0.492
2 IPS	1 IPS	T-612 853	2	16	288	3.88	1.78	1.65	3.86	4.10	0.85	0.492
2 IPS*	2 IPS	T-615 243	2	20	160	5.00	2.17	2.32	3.94	6.06	1.18	1.000
3 IPS*	1/2 CTS	T-612 879	2	16	128	4.68	2.34	1.26	5.24	4.80	1.18	1.113
3 IPS	3/4 IPS	T-612 851	2	16	128	4.68	2.34	1.38	5.24	4.80	1.18	1.112
3 IPS	1 CTS	T-612 852	2	16	128	4.68	2.34	1.65	5.24	4.80	1.18	1.128
3 IPS	1 PTS	T-612 880	2	16	128	4.68	2.34	1.65	5.24	4.80	1.18	1.124
3 IPS	2 IPS	T-616 101	2	12	96	4.76	2.40	2.36	6.10	5.91	1.18	1.265
4 IPS*	1/2 CTS	T-612 881	2	10	80	4.76	2.90	1.26	6.81	7.09	1.18	1.254
4 IPS*	3/4 IPS	T-612 855	2	10	80	4.76	2.90	1.38	6.81	7.09	1.18	1.268
4 IPS*	1 CTS	T-612 856	2	10	80	4.76	2.90	1.65	6.81	7.09	1.18	1.327
4 IPS*	1 IPS	T-612 882	2	10	80	4.76	2.90	1.65	6.81	7.09	1.18	1.302
4 IPS	2 IPS	T-616 102	2	10	80	4.76	2.90	2.36	7.01	7.09	1.18	1.506
4 DIP*	1/2 CTS	T-616 113	2	10	80	4.76	3.05	1.26	6.81	7.09	1.18	1.254
4 DIP*	3/4 IPS	T-616 114	2	10	80	4.76	3.05	1.38	6.81	7.09	1.18	1.268
4 DIP*	1 CTS	T-616 115	2	10	80	4.76	3.05	1.65	6.81	7.09	1.18	1.358
4 DIP	2 IPS	T-616 116	2	10	80	4.76	3.05	2.36	7.01	7.09	1.18	1.506
6 IPS*	1/2 CTS	T-612 883	2	6	48	6.57	4.49	1.26	8.86	7.68	1.18	1.860
6 IPS	3/4 IPS	T-612 859	2	6	48	6.57	4.49	1.38	8.86	7.68	1.18	1.883
6 IPS	1 CTS	T-612 869	2	6	48	6.57	4.49	1.65	8.86	7.68	1.18	1.885
6 IPS	1 IPS	T-612 884	2	6	48	6.57	4.49	1.65	8.86	7.68	1.18	1.898
6 IPS	2 IPS	T-616 103	2	6	48	6.57	4.77	2.36	8.86	7.68	1.18	1.990
6 DIP*	1/2 CTS	T-616 117	2	6	48	6.57	4.63	1.26	8.86	7.68	1.18	1.860
6 DIP	3/4 IPS	T-616 118	2	6	48	6.57	4.63	1.38	8.86	7.68	1.18	1.820
6 DIP	1 CTS	T-616 119	2	6	48	6.57	4.63	1.65	8.86	7.68	1.18	1.885
6 DIP	2 IPS	T-616 121	2	6	48	6.57	4.90	2.36	8.86	7.68	1.18	1.990
8 IPS*	1/2 CTS	T-616 104	2	5	40	6.57	5.26	1.26	9.84	7.68	1.18	1.890
8 IPS	3/4 IPS	T-616 105	2	5	40	6.57	5.26	1.38	9.84	7.68	1.18	1.892
8 IPS	1 CTS	T-612 874	2	5	40	6.57	5.26	1.65	9.84	7.68	1.18	1.835
8 IPS	1 IPS	T-612 873	2	5	40	6.57	5.26	1.65	9.84	7.68	1.18	1.910
8 IPS	2 IPS	T-616 106	2	5	40	6.57	5.77	2.36	9.84	7.68	1.18	1.968
8 DIP*	1/2 CTS	T-616 122	2	5	40	6.57	5.71	1.26	9.84	7.68	1.18	1.890
8 DIP	3/4 IPS	T-616 123	2	5	40	6.57	5.71	1.38	9.84	7.68	1.18	1.892
8 DIP	1 CTS	T-616 124	2	5	40	6.57	5.71	1.65	9.84	7.68	1.18	1.835
8 DIP	2 IPS	T-616 126	2	5	40	6.57	5.98	2.36	9.84	7.68	1.18	1.968

FRIALEN®-Pressure Tapping Tees in the dimensions 3 to 6 in. can be fused to pipes of SDR 9 to SDR 17.6, the dimensions 2 and 8 in. can be fused to pipes of SDR11 to 17.6.

Please turn over for important information regarding application of the **FRIALEN®-DAAI**



FRIALEN®-Pressure Tapping Tees DAAI

with extra long outlet spigot

PE 3408/4710 SDR 11

Maximum working pressure 200 psi (Water) / 125 psi (Gas)

Areas of Application

The FRIALEN®-Pressure Tapping Tees are used for branches of unpressurised and pressurised pipelines.

Assembly Instructions

The saddle and the outlet spigot have to be prepared according to the general installation instructions (see "Assembly Instructions" for "FRIALEN®-Safety Fittings for house connections and distribution pipes").

This involves removing the oxide skin and cleaning the pipe covered by the saddle.

Twelve good reasons for using the FRIALEN®-DAAI

- **Compact design**
- **Installation without rounding clamp and special tools**
- **Preassembled unit without loose parts**
- **Pressure test possible before tapping**
- **Leakage free tapping of gas pipe up to 125 psi operating pressure**
- **Little force required for tapping**
- **Coupon fits securely in cutter**
- **Cutter guided in metal sleeve**
- **Cutter with solid upper and lower stop**
- **Extra wide fusion zone**
- **Dome can be fused with cap after tapping**
- **Installation using elastic clamp for optimum build-up of molten mass pressure during fusion**

Please find our datasheets for downloading on the internet at www.friatec.com

For further information, please call our FRIALEN® customer service staff and specialist advisers.

FRIATEC Aktiengesellschaft · Technical Plastics Division
P.O.B. 71 02 61 · D-68222 Mannheim
Telephone +49 621 486-0 · Telefax +49 621 479196
www.friatec.com · E-Mail: info-frialen@friatec.de


an *OAliaxis* company