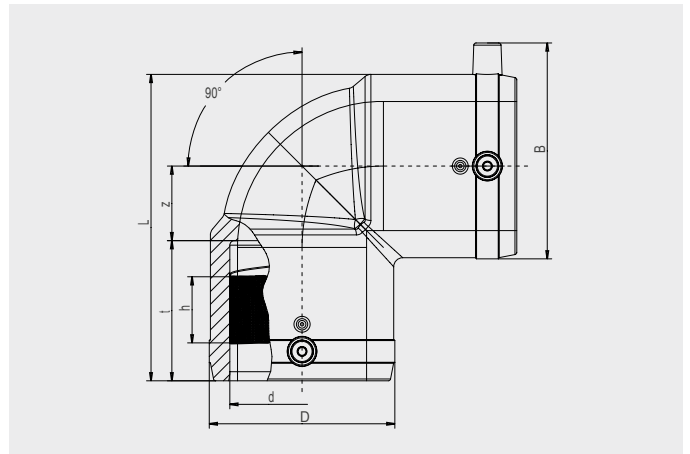


FRIALEN® Safety Fittings

W90 Elbows 90°


PE 100 SDR 11

Maximum working pressure 16 bar (water)/10 bar (gas)



d	Order Ref.	Stock-status	BX	PU	D	L	t	z	h	B	Weight kg/each
20	616686 ①	1	200	3200	28,5	71	30	12	16	41	0.040
25	612091	1	60	1920	37	73	40	15	19	54	0.060
32	612093	1	50	1600	43	82	44	16	21	61	0.070
40	612095	1	25	800	53	96	49	21	29	70	0.110
50	612097	1	20	640	66	113	55	26	32	81	0.190
63	612099	1	10	320	83	136	62	33	30	96	0.340
75	612101	1	12	216	96	170	70	53	37	111	0.600
90	612103	1	6	108	115	202	75	65	45	128	0.950
110	612105	1	10	80	138	234	81	84	50	150	1.560
125	612107	1	8	64	157	254	87	89	44	167	2.030
160	615276	1	3	24	207	329	92	133	44	210	4.850
180	615689	1	3	24	228	354	94	146	65	229	5.760
200	616265	1	2	16	254	392	106	159	54	256	8.557
225	615690	1	1	8	280	430	113	177	66	281	10.220

① Design deviates from product description

FRIALEN-Safety Fittings can be fused to pipes of SDR stages 11 to 17.6. Minimum wall thickness $s_{min} \geq 3$ mm. Other SDR-stages on request. Please observe the marking directly at the product, which is mandatory. DVGW-Registration Nos.: DV-8601AU2248 and DV-8606AU2249

FRIALEN® Safety Fittings

W90 Elbows 90°

Areas of Application

The FRIALEN-Elbow W90° is used for all changes of direction in HD-PE pipes.

Assembly Instructions

The fusion of the pipe ends with the FRIALEN-Elbows W90° takes place by FRIALEN-fusing – leakproof and longitudinally strong.

The pipe ends are prepared according to the general installation instructions (see “Assembly Instructions” for “FRIALEN-Safety Fittings for house connections and distribution pipes up to d 225”). This involves removing the oxide skin and cleaning the pipe ends.

Good reasons for using the FRIALEN-Elbows W90°:

- Large coupler depth for ease of pipe guiding (no holding clamps required)
- Extra wide fusion zones
- Maximum stability through great wall thickness
- Cold zones at the front side and in the middle of the coupler
- Exposed heating coil for direct heat transmission to the pipe
- Small annular gap for build-up of optimum joining pressure in the fusion zone
- Contacts safe to touch
- Fusion indicator for visual fusion control
- Durable batch marking
- Individually wrapped for dirt protection
- Additional barcode for tracing back the fitting (Traceability-Coding)