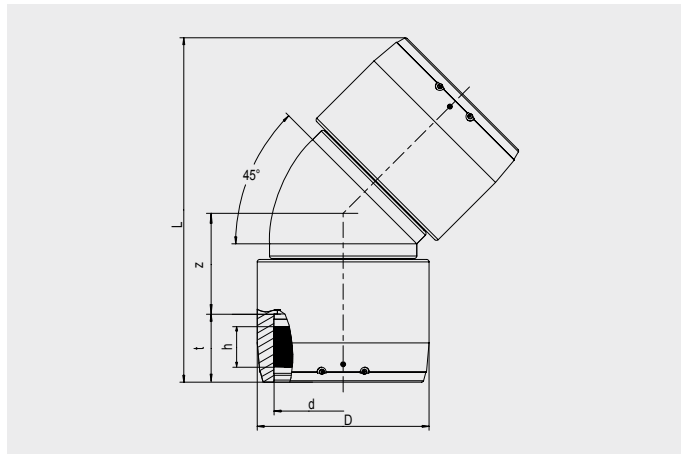


## FRIALEN® Safety Fittings

**W45 XL Elbows 45° XL**


PE 100 SDR 11

Maximum working pressure 16 bar (water)/10 bar (gas)



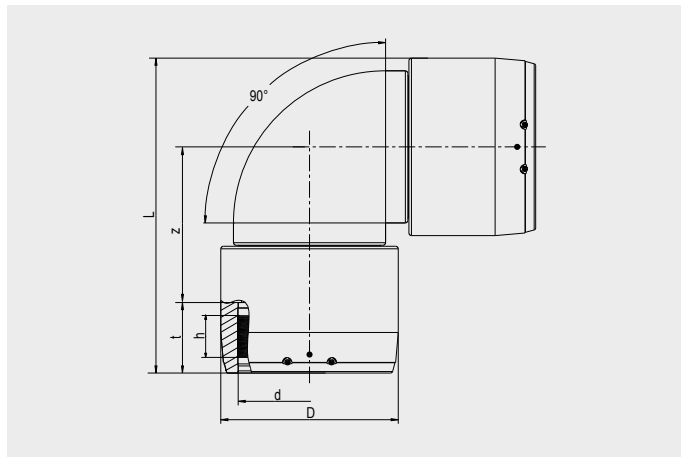
d	Order Ref.	Stock-status	BX	PU	D	L	f	z	h	Weight kg/each
250	616404	1	1	6	310	621	128	176	80	17.300
280	616405	1	1	4	350	702	139	205	84	25.600
315	616406	1	1	2	396	755	150	215	80	36.000

FRIALEN-Safety Fittings can be fused to pipes of SDR stages 11 to 17.6. Other SDR-stages on request.

Please observe the marking directly at the product, which is mandatory.

DVGW-Registration Nos. DV-8601AU2248, DV-8606AU2249 and DV-8611AU2250.

## FRIALEN® Safety Fittings

**W90 XL Elbows 90° XL**


PE 100 SDR 11

Maximum working pressure 16 bar (water)/10 bar (gas)



d	Order Ref.	Stock-status	BX	PU	D	L	f	z	h	Weight kg/each
250	616408	1	1	6	310	534	128	251	80	19.100
280	616409	1	1	2	350	621	139	307	84	27.500
315	616410	1	1	2	396	677	150	329	80	40.000

FRIALEN-Safety Fittings can be fused to pipes of SDR stages 11 to 17.6. Other SDR-stages on request.

Please observe the marking directly at the product, which is mandatory.

DVGW-Registration Nos. DV-8601AU2248, DV-8606AU2249 and DV-8611AU2250.

## FRIALEN® Safety Fittings

### W45 XL Elbows 45° XL

#### Areas of Application

The FRIALEN XL Elbow W45° is used for all changes of direction in HD-PE pipes.

#### Assembly Instructions

The fusion of the pipe ends with the FRIALEN XL Elbow W45° takes place by FRIALEN-fusing – leakproof and longitudinally strong. The pipe ends are prepared according to the general installation instructions (see “Assembly Instructions” for “FRIALEN XL large pipe technology for laying large pipes and relining pipe networks”). This involves removing the oxide layer and cleaning the pipe ends.

#### Good reasons for using the FRIALEN XL Elbow W45°:

- Large coupler depth for ease of pipe guiding (no holding clamps required)
- Extra wide fusion zones
- Maximum stability through great wall thickness
- Cold zones at the front side and in the middle of the coupler
- Exposed heating coil for direct heat transmission to the pipe
- Small annular gap for build-up of optimum joining pressure in the fusion zone
- Contacts safe to touch
- Fusion indicator for visual fusion control
- Durable batch marking
- Individually wrapped for dirt protection
- Additional barcode for tracing back the fitting (Traceability-Coding)