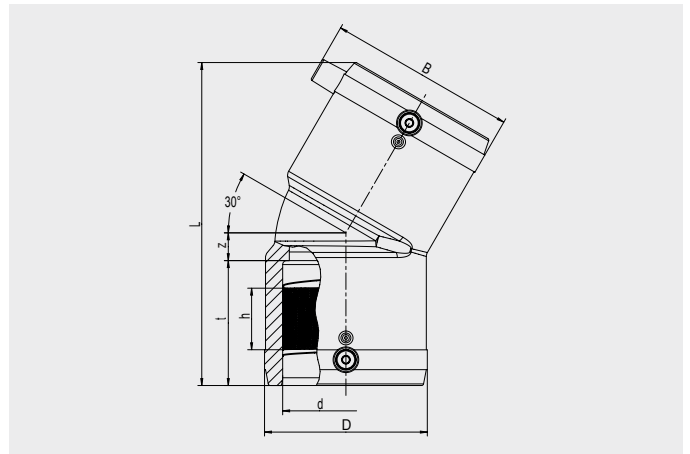


## FRIALEN® Safety Fittings

**W30 Elbows 30°**


PE 100 SDR 11

Maximum working pressure 16 bar (water)/10 bar (gas)



d	Order Ref.	Stock-status	BX	PU	D	L	t	z	h	B	Weight kg/each
90	615272	1	8	144	115	224	72	24	43	123	0.780
110	615273	1	6	108	142	252	83	27	47	157	1.260
125	615274	1	4	72	158	270	85	30	51	162	1.640
160	615340	1	5	40	199	350	96	40	59	198	3.870
180	616261	1	3	24	229	390	101	79	57	234	4.990
200	616262	1	1	18	254	412	106	84	54	256	6.350
225	616263	1	1	18	281	456	123	86	64	282	8.220

FRIALEN Safety Fittings can be fused to pipes of SDR stages 11 to 17.6. Other SDR-stages on request. Please observe the marking directly at the product, which is mandatory. DVGW-Registration No. DV-8606AU2249

## FRIALEN® Safety Fittings

### W30 Elbows 30°

#### Areas of Application

The FRIALEN-Elbow W30° is used for all changes of direction in HD-PE pipes.

#### Assembly Instructions

The fusion of the pipe ends with the FRIALEN Elbows W30° takes place by FRIALEN-fusing – leakproof and longitudinally strong.

The pipe ends are prepared according to the general installation instructions (see “Assembly Instructions” for “FRIALEN Safety Fittings for house connections and distribution pipes up to d 225”). This involves removing the oxide skin and cleaning the pipe ends.

#### Good reasons for using the FRIALEN Elbows W30°:

- Large coupler depth for ease of pipe guiding (no holding clamps required)
- Extra wide fusion zones
- Maximum stability through great wall thickness
- Cold zones at the front side and in the middle of the coupler
- Exposed heating coil for direct heat transmission to the pipe
- Small annular gap for build-up of optimum joining pressure in the fusion zone
- Contacts safe to touch
- Fusion indicator for visual fusion control
- Durable batch marking
- Individually wrapped for dirt protection
- Additional barcode for tracing back the fitting (Traceability-Coding)