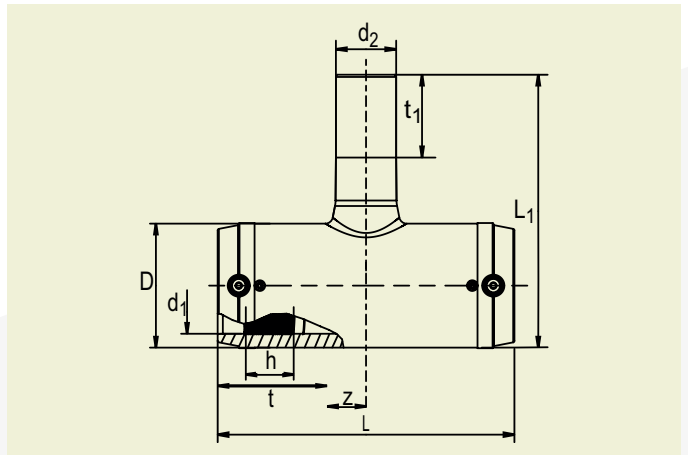


FRIALEN® SAFETY FITTINGS

TA RED T-PIECES REDUCED WITH EXTRA LONG OUTLET SPIGOT



PE 100 SDR 11

Maximum working pressure 16 bar (water)/10 bar (gas)



| d ₁ | d ₂ | Order Ref. | Stock-status | BX | PU | D | L | L1 | t | t ₁ | z | h | B | Weight kg/each |
|----------------|----------------|------------|--------------|----|-----|-----|-----|-----|----|----------------|----|----|-----|----------------|
| 32 | 20 | 616417 | 1 | 30 | 540 | 46 | 116 | 117 | 44 | 42 | 14 | 22 | 62 | 0.110 |
| 40 | 32 | 616418 | 1 | 20 | 360 | 55 | 146 | 148 | 46 | 51 | 28 | 25 | 70 | 0.170 |
| 50 | 32 | 616419 | 1 | 10 | 180 | 69 | 175 | 158 | 55 | 51 | 33 | 28 | 82 | 0.295 |
| 50 | 40 | 616420 | 1 | 10 | 180 | 69 | 175 | 167 | 55 | 55 | 33 | 28 | 82 | 0.315 |
| 63 | 32 | 616421 | 1 | 10 | 180 | 84 | 197 | 173 | 63 | 51 | 36 | 32 | 96 | 0.435 |
| 63 | 40 | 616422 | 1 | 10 | 180 | 84 | 197 | 182 | 63 | 55 | 36 | 32 | 96 | 0.450 |
| 63 | 50 | 616423 | 1 | 10 | 180 | 84 | 197 | 197 | 63 | 60 | 36 | 32 | 96 | 0.490 |
| 90 | 32 | 616675 | 1 | 10 | 80 | 116 | 280 | 172 | 79 | 44 | 61 | 43 | 126 | 1.050 |
| 90 | 63 | 616676 | 1 | 10 | 80 | 116 | 280 | 191 | 79 | 63 | 61 | 43 | 126 | 1.100 |
| 110 | 63 | 616678 | 1 | 8 | 48 | 141 | 310 | 216 | 82 | 63 | 73 | 48 | 148 | 1.700 |
| 110 | 90 | 616679 | 1 | 8 | 48 | 141 | 310 | 244 | 82 | 79 | 73 | 48 | 148 | 1.850 |
| 160 | 90 | 616681 | 1 | 3 | 24 | 203 | 390 | 305 | 98 | 79 | 97 | 45 | 205 | 4.400 |
| 160 | 110 | 616682 | 1 | 3 | 24 | 203 | 390 | 308 | 98 | 82 | 97 | 45 | 205 | 4.500 |
| 160 | 125 | 616683 | 1 | 3 | 24 | 203 | 390 | 313 | 98 | 87 | 97 | 45 | 205 | 4.600 |

FRIALEN safety fittings can be fused to pipes SDR11 - SDR 17.6. Minimum wall thickness $s_{min} \geq 3$ mm. Other SDR-stages on request. Please observe the marking directly at the product, which is mandatory. DVGW-Registration No.: DV-8601AU2248 and DV-8606AU2249.

FRIALEN® SAFETY FITTINGS

TA RED T-PIECES REDUCED WITH EXTRA LONG OUTLET SPIGOT

Areas of Application

The FRIALEN reduced TA red pieces are used for pipe outlets of HD-PE pipelines.

Assembly Instructions

The fusion of the pipe ends with the FRIALEN TA red takes place by FRIALEN-fusing – leakproof and longitudinally strong.

The pipe ends are prepared (removing the oxide layer/cleaning) according to the general installation instructions (see “Assembly Instructions” for “FRIALEN-Safety Fittings for house connections and distribution pipes up to d 225”).

Good reasons for using the FRIALEN TA red:

- Large coupler depth for ease of pipe guiding (no holding clamps required)
- At dim. up to d₁ 63, Length of outlet spigot dimensioned for two fusion operations
- Extra wide fusion zones
- Maximum stability through great wall thickness
- Cold zones at the front side and in the middle of the coupler
- Exposed heating coil for direct heat transmission to the pipe
- Small annular gap for build-up of optimum joining pressure in the fusion zone
- Touch proof electric contacts
- Durable batch marking
- Individually wrapped for dirt protection
- Additional barcode for tracing back the fitting (Traceability-Coding)