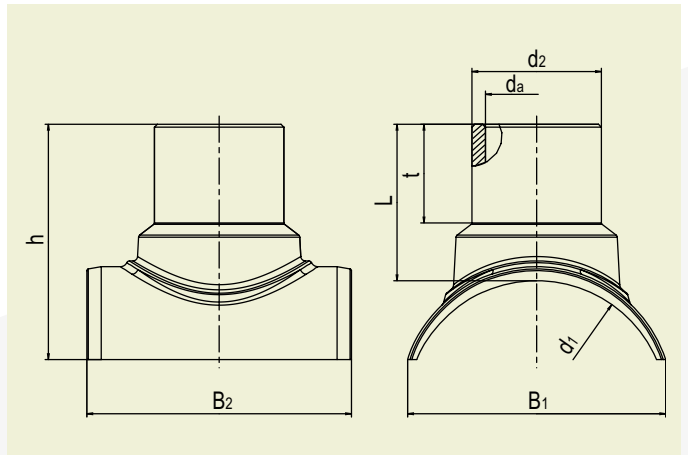
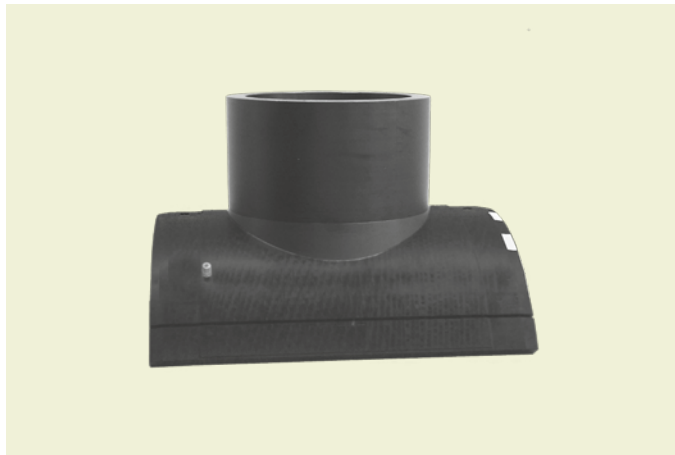


FRIALEN® SAFETY FITTINGS

SA XL SPIGOT SADDLES SA XL



PE 100 SDR 11

Maximum working pressure 16 bar (water)/10 bar (gas)



| d ₁ | d ₂ | Order Ref. | Stock-status | BX | PU | L | t | h | B ₁ | B ₂ | Drilling Ø d _a | Weight kg/each |
|----------------|----------------|------------|--------------|----|----|-----|-----|-----|----------------|----------------|---------------------------|----------------|
| 400 | 225 | 616469 | 3 | 1 | 4 | 263 | 210 | 403 | 483 | 530 | 172 | 14.700 |
| 400 | 250 | 616779 | 3 | 1 | 4 | 261 | 210 | 417 | 483 | 530 | 187 | 15.200 |
| 450 | 225 | 616780 | 3 | 1 | 4 | 267 | 210 | 421 | 530 | 530 | 172 | 17.500 |
| 450 | 250 | 616781 | 3 | 1 | 4 | 272 | 210 | 426 | 530 | 530 | 187 | 18.000 |
| 500 | 225 | 616391 | 3 | 1 | 4 | 265 | 210 | 388 | 521 | 530 | 172 | 14.500 |
| 500 | 250 | 616782 | 3 | 1 | 4 | 263 | 210 | 380 | 521 | 530 | 187 | 15.500 |
| 500 | 280 | 616783 | 3 | 1 | 4 | 265 | 210 | 388 | 521 | 590 | 225 | 15.600 |
| 500 | 315 | 616784 | 3 | 1 | 4 | 268 | 210 | 446 | 573 | 590 | 254 | 21.600 |
| 560 | 225 | 616392 | 3 | 1 | 4 | 263 | 210 | 402 | 577 | 530 | 172 | 15.700 |
| 560 | 250 | 616785 | 3 | 1 | 4 | 263 | 210 | 398 | 577 | 530 | 187 | 17.000 |
| 560 | 280 | 616786 | 3 | 1 | 4 | 265 | 210 | 404 | 577 | 590 | 225 | 17.000 |
| 560 | 315 | 616787 | 3 | 1 | 4 | 268 | 210 | 402 | 564 | 590 | 254 | 19.800 |
| 560 | 355 | 616788 | 3 | 1 | 4 | 260 | 210 | 451 | 618 | 630 | 286 | 26.000 |
| 560 | 400 | 616789 | 3 | 1 | 4 | 260 | 210 | 451 | 618 | 630 | 322 | 27.200 |
| 630 | 225 | 616393 | 3 | 1 | 4 | 265 | 210 | 422 | 634 | 530 | 172 | 17.000 |
| 630 | 250 | 616790 | 3 | 1 | 4 | 267 | 210 | 419 | 634 | 530 | 187 | 17.500 |
| 630 | 280 | 616791 | 3 | 1 | 4 | 263 | 210 | 420 | 634 | 590 | 225 | 18.000 |
| 630 | 315 | 616792 | 3 | 1 | 4 | 265 | 210 | 417 | 621 | 590 | 254 | 20.900 |
| 630 | 355 | 616793 | 3 | 1 | 4 | 269 | 220 | 422 | 616 | 630 | 286 | 23.800 |
| 630 | 400 | 616794 | 3 | 1 | 4 | 267 | 220 | 419 | 616 | 630 | 322 | 25.000 |
| 710 | 225 | 616394 | 3 | 1 | 4 | 270 | 210 | 447 | 712 | 530 | 172 | 20.500 |
| 710 | 250 | 616795 | 3 | 1 | 4 | 265 | 210 | 437 | 712 | 530 | 187 | 22.100 |
| 710 | 280 | 616796 | 3 | 1 | 4 | 268 | 210 | 445 | 712 | 590 | 225 | 21.500 |
| 710 | 315 | 616797 | 3 | 1 | 4 | 268 | 210 | 439 | 694 | 590 | 254 | 23.800 |
| 710 | 355 | 616798 | 3 | 1 | 4 | 285 | 220 | 457 | 694 | 630 | 286 | 28.500 |
| 710 | 400 | 616762 | 3 | 1 | 4 | 275 | 220 | 447 | 694 | 630 | 322 | 29.500 |
| 800 | 225 | 616395 | 3 | 1 | 4 | 270 | 210 | 381 | 643 | 530 | 172 | 17.300 |
| 800 | 250 | 616799 | 3 | 1 | 4 | 275 | 210 | 384 | 643 | 530 | 187 | 18.600 |
| 800 | 280 | 616800 | 3 | 1 | 4 | 268 | 210 | 382 | 643 | 590 | 225 | 18.600 |
| 800 | 315 | 616801 | 3 | 1 | 4 | 268 | 210 | 377 | 629 | 590 | 254 | 20.500 |
| 800 | 355 | 616802 | 3 | 1 | 4 | 290 | 220 | 483 | 772 | 630 | 286 | 31.200 |
| 800 | 400 | 616803 | 3 | 1 | 4 | 275 | 220 | 468 | 772 | 630 | 322 | 31.600 |
| 900 | 225 | 616396 | 3 | 1 | 4 | 268 | 210 | 396 | 714 | 530 | 172 | 19.000 |
| 900 | 250 | 616804 | 3 | 1 | 4 | 278 | 210 | 402 | 714 | 530 | 187 | 20.700 |
| 900 | 280 | 616805 | 3 | 1 | 4 | 268 | 210 | 396 | 714 | 590 | 225 | 20.300 |
| 900 | 315 | 616806 | 3 | 1 | 4 | 269 | 210 | 393 | 700 | 590 | 254 | 23.000 |
| 900 | 355 | 616807 | 3 | 1 | 4 | 305 | 220 | 429 | 700 | 630 | 286 | 27.300 |
| 900 | 400 | 616808 | 3 | 1 | 4 | 275 | 220 | 399 | 700 | 630 | 322 | 28.000 |

PE 100 SDR 11

Maximum working pressure 16 bar (water)/10 bar (gas)



| d ₁ | d ₂ | Order Ref. | Stock-status | BX | PU | L | t | h | B ₁ | B ₂ | Drilling Ø d _a | Weight kg/each |
|----------------|----------------|------------|--------------|----|----|-----|-----|-----|----------------|----------------|---------------------------|----------------|
| 1000 | 160 | 616378 | 3 | 1 | 4 | 300 | 249 | 390 | 654 | 530 | 123 | 17.350 |
| 1000 | 225 | 616397 | 3 | 1 | 4 | 270 | 210 | 396 | 653 | 530 | 172 | 18.000 |
| 1000 | 250 | 616809 | 3 | 1 | 4 | 280 | 210 | 366 | 653 | 530 | 187 | 19.300 |
| 1000 | 280 | 616810 | 3 | 1 | 4 | 270 | 210 | 361 | 653 | 590 | 225 | 19.000 |
| 1000 | 315 | 616811 | 3 | 1 | 4 | 270 | 210 | 358 | 642 | 590 | 254 | 21.000 |
| 1000 | 355 | 616812 | 3 | 1 | 4 | 305 | 220 | 444 | 774 | 630 | 286 | 30.800 |
| 1000 | 400 | 616813 | 3 | 1 | 4 | 278 | 220 | 417 | 774 | 630 | 322 | 31.300 |
| 1200 | 160 | 616383 | 3 | 1 | 4 | 300 | 250 | 375 | 655 | 530 | 123 | 17.200 |
| 1200 | 225 | 616384 | 3 | 1 | 4 | 270 | 210 | 346 | 655 | 530 | 172 | 17.500 |
| 1200 | 250 | 616814 | 3 | 1 | 4 | 284 | 210 | 354 | 655 | 530 | 187 | 19.200 |
| 1200 | 280 | 616815 | 3 | 1 | 4 | 270 | 210 | 345 | 655 | 590 | 225 | 18.600 |
| 1200 | 315 | 616816 | 3 | 1 | 4 | 270 | 210 | 343 | 645 | 590 | 254 | 20.800 |
| 1200 | 355 | 616817 | 3 | 1 | 4 | 305 | 220 | 413 | 759 | 630 | 286 | 29.600 |
| 1200 | 400 | 616818 | 3 | 1 | 4 | 278 | 220 | 385 | 759 | 630 | 322 | 30.300 |

PE 100 SDR 17

Maximum working pressure 10 bar (water)/5 bar (gas)



| d ₁ | d ₂ | Order Ref. | Stock-status | BX | PU | L | t | h | B ₁ | B ₂ | Drilling Ø d _a | Weight kg/each |
|----------------|----------------|------------|--------------|----|----|-----|-----|-----|----------------|----------------|---------------------------|----------------|
| 1000 | 160 | 616378 | 3 | 1 | 4 | 300 | 249 | 390 | 654 | 530 | 123 | 17.350 |
| 1200 | 160 | 616383 | 3 | 1 | 4 | 300 | 250 | 375 | 655 | 530 | 123 | 17.200 |

For other dimensions we refer to our new product Spigot Saddle SA UNI.

FRIALEN safety fittings can be fused to pipes SDR 11 - SDR 17.6.

Other SDR-stages on request. Please observe the marking directly at the product, which is mandatory.

FRIALEN® SAFETY FITTINGS

SA XL SPIGOT SADDLES SA XL

Areas of Application

- Create highly economical branches!
Instead of cost-intensively integrating a T-piece, a branch or vent can be very comfortably created using the new FRIALEN XL spigot saddle SA XL.

Assembly Instructions

A simple assembly, comfortable handling and short processing time characterise the optimised and construction site-appropriate clamping method for large saddle component parts.

- Branch saddle as branch: Your benefit – simple assembly!

The spigot saddles SA XL permit creating also large-volume branches at main pipes - unpressurised or under operating pressure - with less effort, minimal underground work and above all without interrupting the supply.

The saddle can be fixed at any position on the pipe. Thanks to the clamping method specifically developed for SA XL, only access to the covered saddle area is required. Specifically in the case of connections to existing pipelines, the bedding in the pipeline zone is only disturbed as absolutely necessary.

- Vacuum clamping technology: Your benefit – comfortable handling!

The clamping force of the saddle required for fusion and built-up of the joining pressure is applied by a vacuum. This only requires a compressor usual for construction sites and the VACUSET. Out-of-roundnesses and shape deviations of the pipe usually seen at construction sites can be bridged by the clamping method.

But it is above all the required space in the pipe trench – and thus cost-intensive underground work – which is minimised for access to the pipe.

The tapping diameter is almost identical with the pipe's diameter of the outlet spigot such that pressure losses are minimised.

Thanks to the use of preheating technology, the two joining partners (pipe surface and saddle area) are uniformly adjusted.

- Your benefit: Little time required!

Commissioning is possible with only a few actions. Short assembly and fusion times, short cooling times and a quick tapping permit a branch to be completed in almost no time at all!

Good reasons for using FRIALEN XL Spigot Saddle SA XL:

- Compact construction
- HD-PE saddle with exposed heating element for optimal heat transfer
- Low tapping forces
- Burr-free and almost flush tapping for maximum hydraulic performance
- Leakage free tapping possible by means of a shut-off element
- Extra wide fusion zone
- Additional barcode for tracing back the underground fitting (Traceability-Coding)
- Touch proof electric contacts
- Easy and safe assembly by vacuum clamping technology
- Preheating technology for optimum alignment of the joining partners
- Fusion indicators for visual fusion control
- Durable batch marking
- Individually wrapped for dirt protection