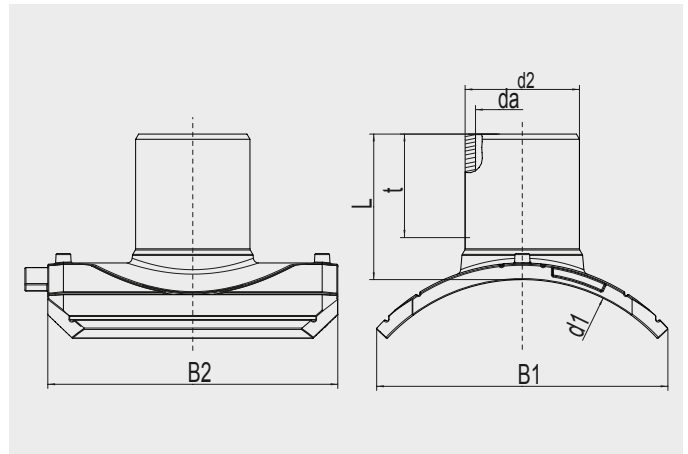


FRIALEN® Safety Fittings

SA UNI Spigot Saddles SA UNI


PE 100 SDR 11

Maximum working pressure 16 bar (water)/10 bar (gas)



d_1	d_2	Order Ref.	Stock-status	BX	PU	L	†	B_1	B_2	Drilling $\varnothing d_a$	Weight kg/each
250-280	90	616553	1	5	40	130	79	260	279	65	1.465
250-280	110	616554	1	5	40	140	82	260	279	84	1.610
250-280	125	616555	1	5	40	146	87	260	279	95	1.790
250-280	160	616556	1	5	40	158	98	260	279	123	2.180
315-400	90	616557	1	5	40	130	79	280	279	65	1.485
315-400	110	616558	1	5	40	140	82	280	279	84	1.630
315-400	125	616559	1	5	40	146	87	280	279	95	1.810
315-400	160	616560	1	5	40	158	98	280	279	123	2.190
450-900	90	616561	1	5	40	130	79	307	279	65	1.500
450-900	110	616562	1	5	40	140	82	307	279	84	1.645
450-900	125	616563	1	5	40	146	87	307	279	95	1.820
450-900	160	616564	1	5	40	158	98	307	279	123	2.200

FRIALEN safety fittings can be fused to pipes SDR 11 - SDR 26. Other SDR-stages on request. Please observe the marking directly at the product, which is mandatory.

FRIALEN® Safety Fittings

SA UNI Spigot Saddles SA UNI



Areas of Application

Instead of cost-intensively integrating a T-piece, a branch or vent can be very comfortably created using the FRIALEN spigot saddle SA-UNI. The spigot outlet can be fused with FRIALEN couplers MB or UB.

Assembly Instructions

The saddle is clamped onto the pipe with the UNITOP clamping device (see FRIATOOLS product range). The clamping device UNITOP is an universal tool for all SA-UNI dimensions. Please read the assembly and operating instructions for the clamping device UNITOP.

The fusion of the HD-PE distribution pipes and the house connections with FRIALEN-Spigot Saddles SA-UNI takes place by FRIALEN-fusing – leakproof and longitudinally strong.

The saddle and the outlet spigot have to be prepared according to the general installation instructions (see assembly instruction FRIALEN-XL for laying large pipes and relining pipe networks). This involves removing the oxide skin and cleaning the pipe covered by the saddle.

For tapping of pipes without pressure please use the FRIATOOLS tapping equipment FWAB XL. Please refer the assembly and operating instructions of the drilling device FWAB XL / FWAB ASA. The fusion and tapping of pipes under pressure is possible with special tapping equipment. Please contact our applications engineers.

Good reasons for using the FRIALEN Spigot Saddle SA-UNI:

- Compact construction
- HD-PE saddle with exposed heating element for optimal heat transfer
- Low tapping forces
- Burr-free and almost flush tapping for maximum hydraulic performance
- Leakage free tapping possible by means of a shut off element
- Extra wide fusion zone
- Additional barcode for tracing back the underground fitting (Traceability-Coding)
- Before tapping the pipe a leak test can take place with the pressure testing device (FWDPA SA)
- Touch proof electric contacts
- Easy and safe assembly by top-loading with the UNITOP clamping device.
- Fusion indicators for visual fusion control
- Durable batch marking
- Individually wrapped for dirt protection