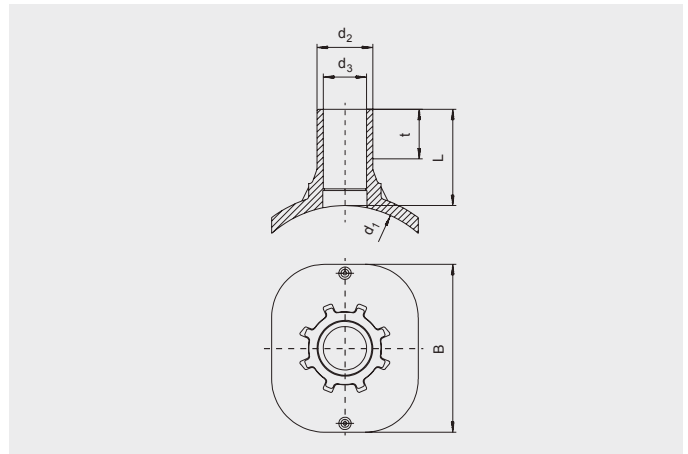


FRIALEN® Safety Fittings

SA TL Spigot Saddles Top-Loading


PE 100 SDR 11

Maximum working pressure 16 bar (water)/10 bar (gas)



d_1	d_2	Order Ref.	Stock-status	BX	PU	d_3	L	t	B	Drilling $\varnothing d_o$	Weight kg/each
250-560	32	615465	1	5	90	21	109	42	200	20	0.621
250-560	63	615466	1	5	90	47	109	56	200	46	0.676

1) Drilling diam. max. 60 mm

2) We recommend the tapping equipment of Hütz + Baumgarten

 FRIALEN-spigot saddles $\leq d 63$ can be used to pipes of SDR stage 11 and $> d 63$ to pipes of SDR stages 11 to 17.6.

Other SDR-stages on request. Please observe the marking directly at the product, which is mandatory. DVGW-Registration-No.: DV-8606AU2249 and DV-8611AU2250

FRIALEN® Safety Fittings

SA TL Spigot Saddles Top-Loading

Areas of Application

The FRIALEN-Spigot Saddles SA TL are used for tapping in the depressurised state of gas and water pipes as well as for pressure drainage. Outlet spigot for use with FRIALEN-couplers MB or UB.

SA TL can be used for pipes in the depressurised state as a T-piece with reduced outlet.

Assembly Instructions

The saddle is clamped onto the pipe with the FRIATOP clamping device (see pricelist "Technical Equipment"). Please read the "Assembly and Operating Instructions for FRIATOP clamping unit (Top-Loading)".

The fusion of the HD-PE distribution pipes and the house connections with FRIALEN-Spigot Saddles SA TL takes place by FRIALEN-fusing – leakproof and longitudinally strong.

The saddle and the outlet spigot have to be prepared according to the general installation instructions (see "Assembly Instructions" for "FRIALEN-Special Technology for laying large bore pipes and relining pipe networks $\geq d$ 250"). This involves removing the oxide layer and cleaning the pipe covered by the saddle.

Swarfless tapping up to \varnothing 46 mm, at \varnothing 60 mm extremely swarf-reduced.

For tapping pressurized pipes a shut off equipment can be used or tapping with the tapping device can be done via a combination of shut off device/KHP-Ball Valve/EFL-Full Faced Flange or shut off device/AQUAFast-Flange.*

* (see brochure FRIALEN spigot saddles SA and SA TL: Drilling of HD-PE pipes – pressure free or under operating pressure)

Good reasons for using the FRIALEN-Spigot Saddles SA TL:

- Compact construction
- Exposed heating element for optimal heat transfer
- Swarfless tapping by tapping equipment of Hütz + Baumgarten
- Leakage free tapping possible by means of a shut off element
- Extra wide fusion zone
- The SA-TL can be applied universally to large HD-PE pipe diameters d 250-560. This means additional economy due to less material needed and less stock both with suppliers and trade
- Additional barcode for tracing back the underground fitting (Traceability-Coding)