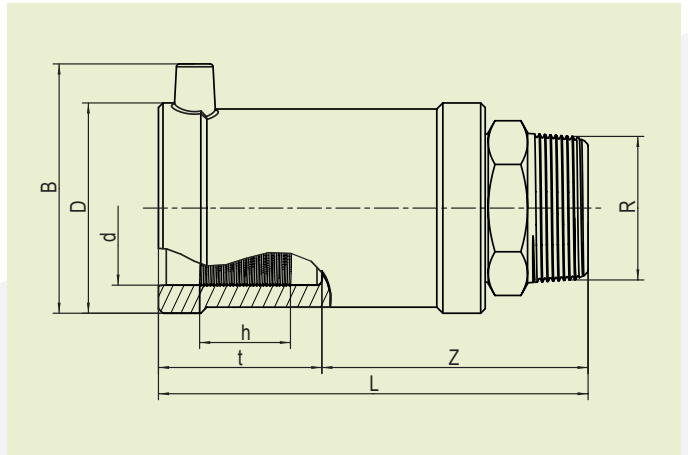
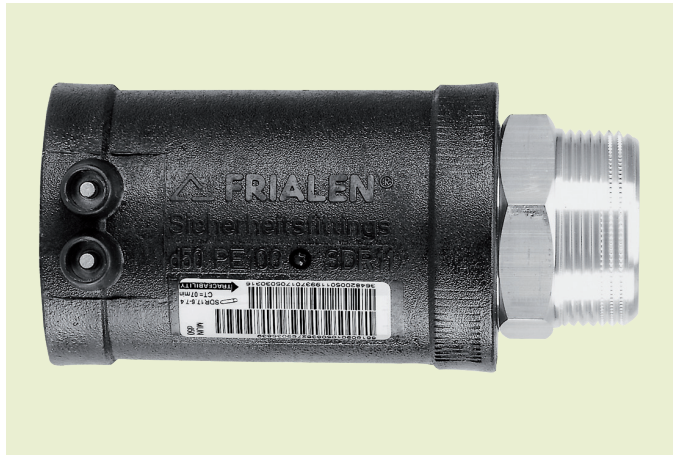


FRIALEN® SAFETY FITTINGS

MUN-V2A TRANSITION FITTINGS HD-PE/STAINLESS STEEL WITH MALE THREAD



PE 100 SDR 11
Maximum working pressure 16 bar (water)



d	R	Order Ref.	Stock-status	BX	PU	D	L	t	z	h	B	Weight kg/each
40	1"	616516	1	20	1000	58	123	45,5	75	30	69.5	0,460
40	1 1/2"	612727	1	20	1000	58	127	45,5	78	30	69.5	0,495
50	1 1/2"	612726	1	15	750	70	137	53	84	29.8	80	0,600
63	1 1/2"	612705	1	10	500	84	137	53	84	35	93.5	0,865
63	2"	612899	1	10	500	84	142	53	89	35	93.5	0,910

Other thread sizes on request

FRIALEN safety fittings can be fused to pipes SDR11 - SDR 17.6, minimum wall thickness $s_{min} \geq 3$ mm. Other SDR-stages on request. Please observe the marking directly at the product, which is mandatory.
DVGW-Registration Nos. DV-7501AU2256 and DV-7501AU2257

FRIALEN® SAFETY FITTINGS

MUN-V2A TRANSITION FITTINGS HD-PE/STAINLESS STEEL WITH MALE THREAD

Areas of Application

FRIALEN-Transition Fittings MUN-V2A are threaded joints as an adaptor from a metal pipe with internal thread to a HD-PE pipe. Joint on the part of HD-PE by FRIALEN-Coupler. The threaded joint is made of stainless steel (Material St. 1.4305 / X8CrNiS18-9).

Assembly Instructions

During assembly, only a spanner applied to the provided metal hexagon must be used to screw the component into its metal counterpart. The fusion of the HD-PE side takes place by FRIALEN-fusing – leakproof and longitudinally strong.

The installation of the stainless steel and the HD-PE side has to be prepared according to the general installation instructions (see "Transition Fittings with threaded connection" in "Assembly Instructions" for "FRIALEN-Safety Fittings for house connections and distribution pipes up to d 225"). This involves removing the oxide skin and cleaning the pipe ends.

Good reasons for using the FRIALEN-Transition Fittings MUN-V2A:

- Compact construction
- HD-PE side with exposed heating element for optimal heat transfer
- Cold zones at the end to prevent the flow of molten material
- No holding clamps required
- Large insertion depth, extra wide fusion zones
- Stainless steel end permanently anchored in the HD-PE and will not distort
- Self sealing patented sealing geometry without elastomer seal
- Additional barcode for tracing back the underground fitting (Traceability-Coding)
- Threaded joint made of stainless steel (St. 1.4305) = resistant to corrosion
- Suitable for usage in high humidity environment or in industrial area