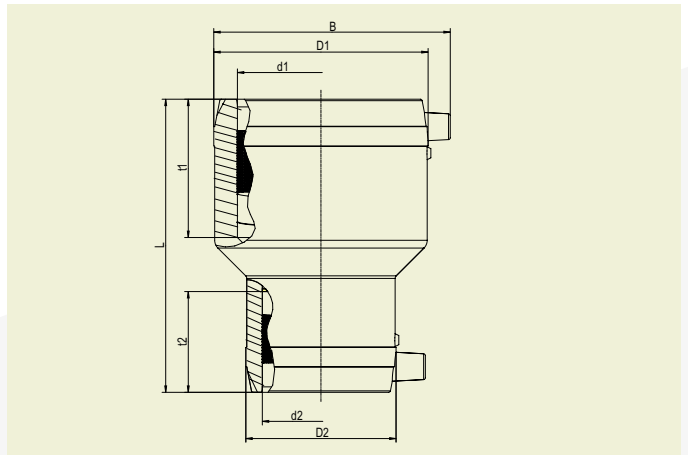


FRIALEN® SAFETY FITTINGS

MR ELECTROFUSION REDUCERS



PE 100 SDR 11

Maximum working pressure 16 bar (water)/10 bar (gas)



d ₁	d ₂	Order Ref.	Stock-status	BX	PU	L	t ₁	t ₂	D ₁ /D ₂	B	Weight kg/each
32	16	616452	3	70	2.240	91	39	34.00	45/28	62	0.060
32	20	615386	1	80	2560	88	39	30.00	45/32	62	0.060
32	25	615502	1	70	2240	88	39	33.00	45/38	62	0.070
40	20	615387	1	60	1920	98	43	30.00	54/32	70	0.080
40	25	616751	1	120	1280	101	50	40.00	54/38	66	0.090
40	32	615388	1	50	1600	98	43	39.00	54/45	70	0.090
50	20	612069	1	32	1024	110	49	37.00	68/32	82	0.130
50	25	616752	1	130	960	107	52	39.00	66/38	77	0.120
50	32	612070	1	32	1024	110	49	39.00	68/45	82	0.140
50	40	612071	1	25	800	110	49	43.00	68/54	82	0.140
63	32	615389	1	18	576	125	55	44.00	82/45	96	0.210
63	40	615390	1	16	512	125	55	43.00	82/54	96	0.220
63	50	612072	1	16	512	125	55	48.00	82/68	96	0.230
75	63	616583	1	15	270	143	61	55.00	94/79	110	0.325
90	50	615391	1	15	270	160	69	49.00	117/68	129	0.470
90	63	615392	1	15	270	160	69	55.00	117/82	129	0.510
90	75	616582	1	15	270	159	67	63.00	113/94	127	0.505
110	63	615393	1	10	180	160	79	55.00	142/82	152	0.730
110	90	615693	1	8	144	180	79	69.00	140/115	152	0.900
125	90	615694	1	8	144	200	86	69.00	155/115	166	0.980
125	110	616510	1	16	128	202	95	70.00	157/137	172	1.300
160	110	615695	1	8	64	230	98	79.00	201/140	207	1.990
180	125	616511	1	1	60	275	108	74.00	214/155	230	2.600
225	160	616356	1	1	36	270	110	98.00	282/203	283	4.860

FRIALEN safety fittings can be fused to pipes SDR11 - SDR17.6 with exception of the dimensions d 125/110 and d 180/125. These dimensions can be fused to pipes SDR9 - SDR26. Minimum wall thickness s min ≥ 3 mm. Other SDR-stages on request. Please observe the marking directly at the product, which is mandatory. DVGW-Registration Nos. DV-8601AU2248 and DV-8606AU2249

FRIALEN® SAFETY FITTINGS

MR ELECTROFUSION REDUCERS

Areas of Application

The FRIALEN Electrofusion Reducer MR is applied for immediate pipe reduction within the pipe system.

Assembly Instructions

Fusing of pipe ends with the FRIALEN Electrofusion Reducers MR takes place by FRIALEN fusion – leakproof and longitudinally strong.

The pipe ends are prepared according to the general installation instructions (note “Assembly Instructions” for FRIALEN Safety Fittings for house connections and distribution pipes (remove oxide layer/clean).

Good reasons for using the FRIALEN Electrofusion Reducers MR:

- Large coupler depth for ease of pipe guiding (no holding clamps required)
- Extra wide fusion zones
- Maximum stability through great wall thickness
- Cold zones at the front side and in the middle of the coupler
- Exposed heating coil for direct heat transmission to the pipe
- Small annular gap for build-up of optimum joining pressure in the fusion zone
- Touch proof electric contacts
- Fusion indicator for visual fusion control
- Durable batch marking
- Individually wrapped for dirt protection
- Additional barcode for tracing back the underground fitting (Traceability-Coding)