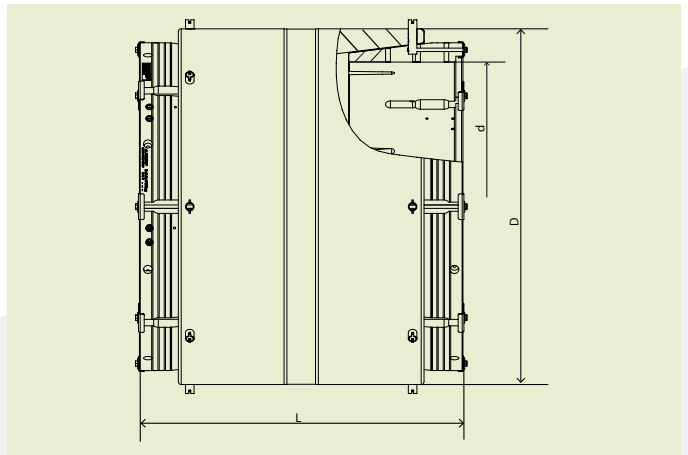
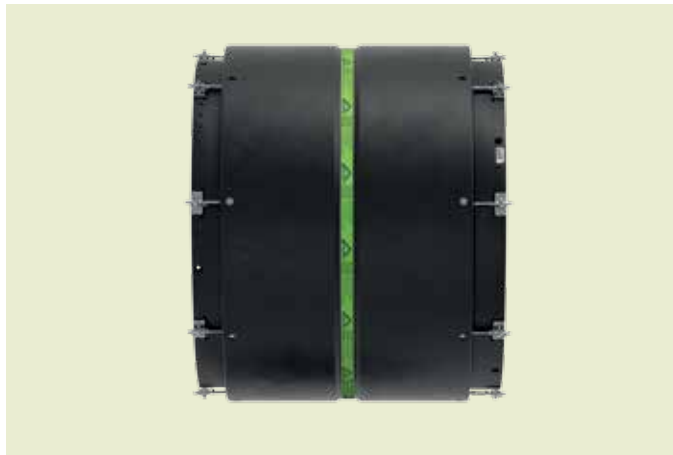


FRIALEN® SAFETY FITTINGS

KM XL CONICAL RING COUPLERS



PE 100 SDR 17

Maximum working pressure 10 bar (water)/5 bar (gas)



d	Order Ref.	Stock-status	BX	PU	D	L	Range of tolerance d/pipe	Weight kg/each
355	616535	3	1	1	497	705	0/+8	36.500
400	616536	3	1	1	550	730	0/+8	46.000
450	616537	3	1	1	602	750	0/+8	54.000
560	616539	3	1	1	730	850	0/+10	88.100
630	616523	3	1	1	805	940	0/+11	135.000
800	616541	3	1	1	1005	1065	0/+13	207.000
1000	616434	3	1	1	1245	1145	-4/+9	350.000
1200	616435	3	1	1	1450	1290	0/+12	500.000

FRIALEN conical ring couplers can be fused to SDR 17–17.6 pipes. Other SDR sizes on request. Please observe the marking directly at the product, which is mandatory.

FRIALEN® SAFETY FITTINGS

KM XL CONICAL RING COUPLERS

Areas of Application

FRIALEN conical ring couplers KM XL greatly simplify connections on pipes exhibiting large ovalities and tolerances and flattened points.

Assembly Instructions

The conical ring coupler KM XL features a unique flexible conical ring coupler technology that adapts it to pipe surface irregularities. This variable range of diameter tolerances can also offset large tolerances on the pipe's outer diameter and ovality. Installation can proceed after the one scraping process only, without retaining devices and rounding clamps (for pipe ovalities up to 6%).

The preparations (removing the oxide layer/cleaning) and the assembly work (conical ring activation / fusion) are described in the general assembly instructions (see the instructions for the FRIALEN conical ring coupler KM XL).

The fusion of the pipe ends with the conical ring coupler KM XL takes place by FRIALEN-fusing – leakproof and longitudinally strong.

The conical ring coupler KM XL must be fused exclusively with the powerful fusion unit FRIAMAT XL fitted with a Y plug. The FRIAMAT XL is a universal solution operating with an input voltage of 400 V and output voltage of max 80 V.

The conical ring coupler KM XL d 1200 must be fused twice on both coupler sides (separate fusion of inside conical ring and outside conical ring).

Good reasons for the FRIALEN conical ring coupler KM XL:

- Compact design
- Maximum stability thanks to large wall thicknesses
- Exposed heating coil for direct heat transfer to the pipe
- The mechanical flexible conical ring technology can minimise the gap width
- Easy and reliable installation, also on large pipe ovalities and tolerances and on local flattening
- One scraping process only to remove the oxide layer is enough
- No additional processing tools necessary like alignment clamps or rounding clamps
- Touch proof electric contacts
- Durable batch marking
- Individually wrapped for dirt protection
- Additional barcode for tracing back the fitting (Traceability-Coding).