



## FRIAFIT<sup>®</sup> SEWAGE SYSTEM **FIXBLOC**

Used as a pull-out protection,  
for fixation and for creation of a fixed point

# IN EVERY CASE SECURE! THE FRIAFIT®-FIXBLOC

## INSTALLED EASILY AND RELIABLY, IT ABSORBS HIGH TENSILE AND SHEAR FORCES

The FRIAFIT FIXBLOC can be processed to PE pipelines of d 160 to d 1600.

The FRIAFIT FIXBLOC is processed easily and reliably on the PE pipe with the FRIATOOLS clamping unit FIXBLOC FWFB or a tensioning belt.

It is secured in place with standard fusion units, e.g. the FRIAMAT.

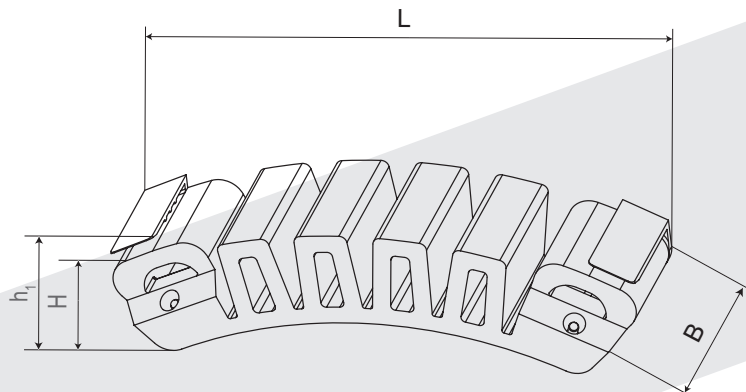
Its compact design and large fusion zone are ideal for absorbing high tensile and shear forces up to 40KN / 9000lbf.

Simple installation, even of multiple FRIAFIT FIXBLOCs around the pipe circumference, is possible with a tensioning belt. The required tensioning belts should be 50 mm wide and have a minimum length of approx 3.5 times the pipe diameter, longer for

multiple applications.

If the belt around the pipe circumference is inaccessible, a special clamping unit, the FIXBLOC FWFB, can be used. This can also clamp the FIXBLOC from the pipe's cut edge where it can be fused in place. This is particularly helpful when the pipe circumference is inaccessible, e.g. in case of a PE-Liner, which must be anchored against the concrete wall of a manhole.

The FRIAFIT FIXBLOC has exposed heating coils for the optimal transfer of heat.



d	Order Ref.	Stock-status	BX	PU	L	H	h1	B	Weight
160 - 1600 mm	682600	1	15	750	220 mm	40 mm	45 mm	60 mm	0,310 kg/each
6 - 64 IPS	682600	1	15	750	8.661 inch	1.575 inch	1.772 inch	2.362 inch	0.683 lbs/each

### YOUR CONTACT

> info-friafit@friatec.de  
> www.friafit.com  
> +49 621 486-1896



**Universal applications  
on pipe sizes from  
d 160 to d 1600 mm**

### **CLAMPING UNIT FOR EASE OF INSTALLATION - RELIABLY AND SECURELY**

The FRIATOOLS clamping unit FIXBLOC FWFB can be used to install the FIXBLOC at the end of the pipe. Also a standard tensioning belt can be used to install multiple FRIAFIT FIXBLOCs easily and reliably.

### **ABOVE GROUND PIPE IN- STALLATIONS - FIXED - IN THE AIR OR AT A DEPTH**

To create a fixed point.

### **SAFETY FOR SLIP-LINING**

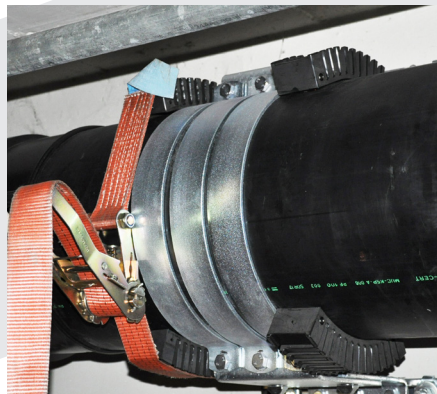
The retracted PE-Liner can be pulled into the old pipe by cooling effects.



Blocking pipe movement after slip-lining.



Anchoring the pipe to a concrete wall such as a manhole.



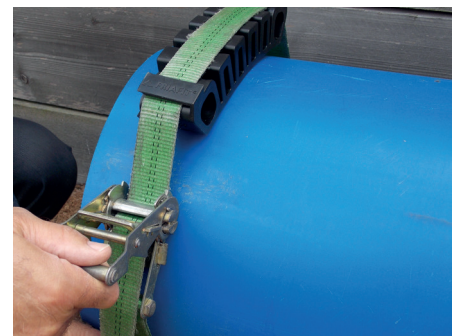
Application as a fixed point on an overhead pipeline.



Application as a fixation for sink-weights.



Assembly with the FRIATOOLS clamping device FIXBLOC FWFB.



Assembly with tensioning belt.

*Aliaxis*

FRIATEC Aktiengesellschaft  
Technical Plastics Division  
P.O.B. 710261 · 68222 Mannheim, Germany  
Tel +49 621 486-1896- Fax +49 621 486-25-1896  
[www.friafit.com](http://www.friafit.com)

