



FRIAFIT[®] FIXBLOC

For use as a protection against extraction,
for fixing or to
create a fixed point

www.friafit.com

THE FRIAFIT FIXBLOC DOESN'T GIVE UP!

For universal use on PE-HD pipe lines with dimensions d 160 up to d 1600 as a protection against indentation or extraction, as a fixing or to create a fixed point

The FRIAFIT FIXBLOC can be used anywhere, where high levels of axial push-pull forces must be absorbed. For example, for pipe reconstructions, when creating fixed points and fixings.

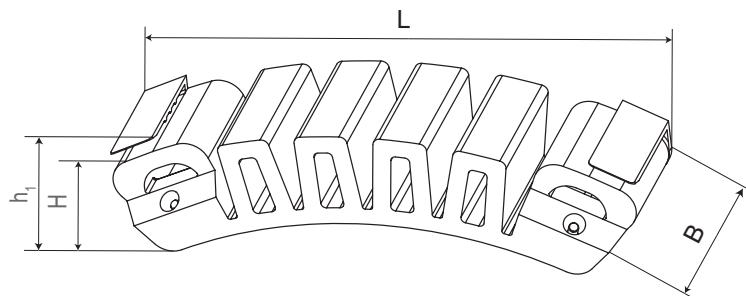
Thanks to its compact construction, exposed heating coils, which ensure optimum heat transfer and the large fusion zone, high levels of push-pull forces of up to 40 kN per FIXBLOC can be absorbed without a problem. When using several FIXBLOCs on the pipe, high levels of forces can also be absorbed.

The assembly of the FRIAFIT FIXBLOC is simple and rapid using a strap or - where the pipe circumference is not accessi-

ble - using the FRIATOOLS FIXBLOC FWFB clamping unit. With strap assembly the FIXBLOC is fitted on the pipe with a standard strap.

When assembling using the FRIATOOLS FIXBLOC FWFB clamping unit, the FIXBLOC can also be clamped from the cut edge of the pipe and be welded. This is particularly useful if the pipe circumference is not accessible, e.g. with a PE liner in a channel, which must be anchored against the shaft wall.

The fusion process is carried out using standard fusion equipment, e.g. using our FRIAMAT.



YOUR CONTACT

> info-friafit@friatec.de
> www.friafit.com
> +49 621 486-1896



d	Order Ref.	Stock-status	BX	PU	L	H	h1	B	Weight kg/each.
160 - 1600	682600	1	15	750	220	40	45	60	0,310

STANDARD PROCESSING - SIMPLE AND SECURE WITH STRAP

The FRIAFIT FIXBLOC can be fitted with a standard strap onto a PE pipe. If a higher anchor force is required, then several FIXBLOCs can be applied to one pipe.

Requirement for strap:

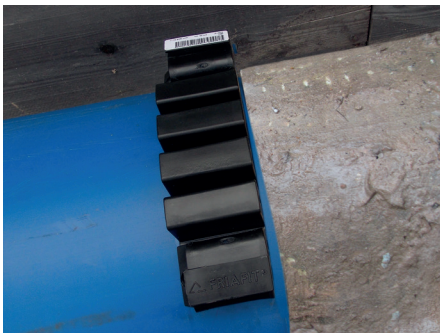
- Strap width 50 mm
- Strap length approx. 3.5 x pipe diameter, or for multiple applications longer as appropriate



Assembly with strap.

FRIAFIT FIXBLOC - UNIVERSAL APPLICATION CAPABILITIES

In pipe reconstruction. Through cooling effects, the contracted PE pipe can be pulled into the PE liner in the old pipeline.



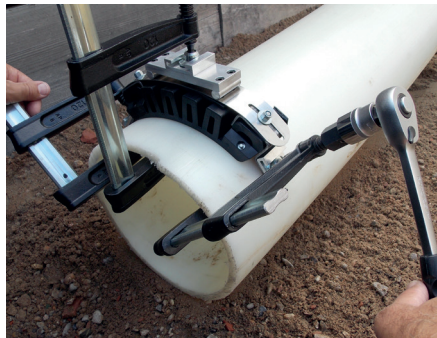
Use as indentation protection in pipe reconstruction.



Use as indentation protection in shaft connection.

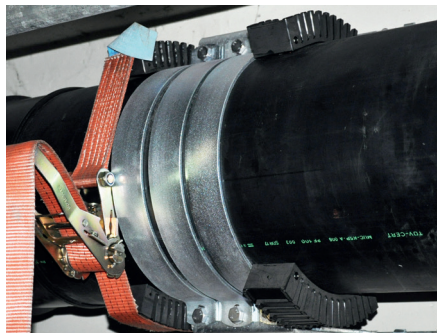
PROCESSING USING THE FIXBLOC FWFB CLAMPING UNIT

Using the FRIATOOLS FIXBLOC FWFB clamping unit you can fit the FIXBLOC on PE pipes with dimension range from d=160 to d=500 on the cut edge of the pipe.



Assembly with the FRIATOOLS FIXBLOC FWFB clamping unit.

To create a fixed point or fixing point.



Use as a fixed point for overground pipe installations.



Use as a fixing for sink weights for under water pipelines.

YOUR BENEFITS:

- Strength for each fixed point up to 40 kN
- Multiple applications round the pipe circumference are possible
- Simple processing using standard straps or using the FIXBLOC FWFB clamping unit

Aliaxis

FRIATEC Aktiengesellschaft
Technical Plastics Division
P.O.B. 710261 · 68222 Mannheim, Germany
Tel +49 621 486-1896- Fax +49 621 486-25-1896
www.friafit.com

